



Rabbit anti ERK1/2 (P44-MAPK) (PairedT202/Y204) Polyclonal Antibody

Alternative Name(s): MAP kinase 1; MAPK1; ERK-1

Order Information

- **Description:** ERK1/2 (P44-MAPK) (PairedT202/Y204)
- **Catalogue:** 602-320
- **Lot:** See label
- **Size:** 100ug/200ul
- **Host:** Rabbit
- **Clone:** nan
- **Application:** IHC(P), WB
- **Reactivity:** Hu, Ms, Rt, Ck, Canis

ANTIGEN PREPARATION

A synthetic peptide derived from epitope –LTEYV- without the dual phosphorylation sites Thr202 and Tyr204 of ERK1/2 protein from human, rat, mouse and dog origins.

BACKGROUND

The extracellular signal-regulated kinases ½ (ERK1/2) are also known as MAPK (Mitogen-activated protein kinases) are a widely conserved family of serine/threonine protein kinases involved in many cellular programs such as cell proliferation, differentiation, motility, and death. The p44/42 MAPK (ERK1/2) signaling pathway can be activated in response to a diverse range of extracellular stimuli including mitogens, growth factors, and cytokines and is an important target in the diagnosis and treatment of cancer. The phosphorylation of MAPK at Thr202 and Tyr 204 are correlated to the progression and metastatic potential of tumor cells.

PURIFICATION

The Rabbit IgG is purified by Epitope Affinity Purification

FORMULATION

This affinity purified antibody is supplied in sterile Phosphatebuffered saline (pH7.2) containing antibody stabilizer

SPECIFICITY

This antibody recognizes ERK1/2 without the dual phosphorylation sites Thr202 and Tyr 204. It does not cross-react with Phosphospecific peptide.

STORAGE

The antibodies are stable for 24 months from date of receipt when stored at –20oC to –70oC. The antibodies can be stored at 2oC-8oC for three month without detectable loss of activity. Avoid repeated freezing-thawing cycles.

APPLICATIONS/SUGGESTED WORKING DILUTIONS*

- Western Blot: 0.1-1 µg/ml
- ELISA: 0.01-0.1 µg/ml
- Immunoprecipitation: 2-5 µg/ml
- IHC: 2-10 µg/ml
- Flow cytometry: Not tested
- Molecular Weight: 42.0
- Positive Control: Kidney Tissue
- Cellular Location: Cell Membrane

*Optimal dilutions should be determined by researchers for the specific applications.

FOR RESEARCH USE ONLY.

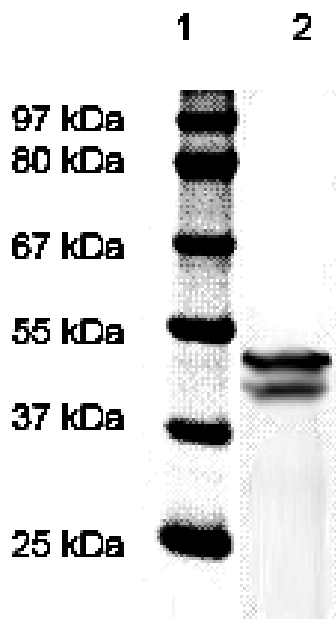
AbboMax, Inc 2528 Qume Drive, Suite 8, San Jose, California 95131, USA
1 408-573-1898 (Tel). 1 408-573-1858 (Fax). www.abbomax.com info@abbomax.com



FOR RESEARCH USE ONLY.

AbboMax, Inc 2528 Qume Drive, Suite 8, San Jose, California 95131, USA
1 408-573-1898 (Tel). 1 408-573-1858 (Fax). www.abbomax.com info@abbomax.com

DATA ATTACHMENTS



Western Blot : The whole cell lysate derived from 3T3 was separated in 10% SDS-PAGE, transferred onto NC membrane, and immunoblotted by Rabbit anti – ERK1/2 (Paired T202/Y204) (Cat#602-320) antibody at 1:500 . A dual immunoreactive band around ~42/44 kDa is observed.

REFERENCES

FOR RESEARCH USE ONLY.

AbboMax, Inc 2528 Qume Drive, Suite 8, San Jose, California 95131, USA
1 408-573-1898 (Tel). 1 408-573-1858 (Fax). www.abbomax.com info@abbomax.com